

## ALL THE NEWS THAT COMPLETE BLINDS WANTS TO SHARE

Take a moment to ponder ....  
*'Abbreviation'... shouldn't it just be 'Abbrev'??*

Well ... it has been a while, hasn't it? Since we last spoke.... Christmas came and went as fast as cannellini beans through a vegan's digestive system... tried to stick to ~~my~~ our New Year resolutions and failed miserably (oh come on, who knew that chocolate was like **everywhere**?! 😞) and to top it off, Easter just went and hopped on straight past us 😞, leaving behind lots of little chocolate pellets (damn you, rabbit 😞👊)

But do not fear, CBC has been busy through these times working on new and exciting things to bring to the table!!  
Read on for the news that is all important to us at CBC 😊

In no particular order, here are the winners of the April Newsletter great news section...

## LOUVOLITE

In June 2022, the new Louvolite fabric ranges will arrive to great fanfare, but we can't tell you about it.

Not because it is a big secret, but because we have absolutely no idea what to expect 😱!  
*(Although... you can bet your best dancing shoes that there will be some stunning new fabrics unveiled!)*

The great news that we are sharing is, because the new range will be released in 14 months, the current 2020 swatch books are on sale for unrepeatable prices!

Roller / Roman / Panel Glide Book	\$140 + GST	Vertical Fabric Book	\$75 + GST
Latitude Book (All fabrics over 2.7m wide)	\$80 + GST	Vision Book	\$80 + GST
Pleated / Cellular Book	\$105 + GST	Visage Book	\$65 + GST
Halo & Luna – Card only	\$60 + GST		

But wait, there's more.... we have a great combo meal deal on offer.

Any combination of books above (3 different products) is **\$275 + GST!** (includes freight)

*How do we do it, you ask?!? We didn't. Louvolite Australia did, and we thank them very much for it 😊*

*Oh... and another thing...*

*We, here at CBC, are so close to finishing the setting up of tooling for the on-site manufacture of the*

**Louvolite Perfect Fit frames!!**

*Soon you will receive official information on options that are being offered and pricing. But I felt compelled to tell you that these will be available for our Honeycomb, Pleated and Aluminium Venetian blinds.*

*It's so exciting!!!!*



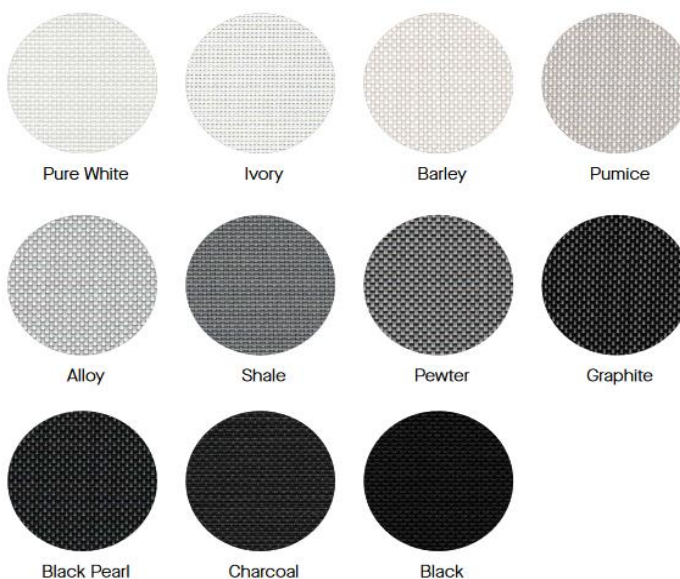


TEXSTYLE

is proud to present their new baby to the world of window furnishings,

# Kleenscreen®

Straight from the mouths of the Texstyle website, "The all new Kleenscreen with Sanitized® Protection. This unique antimicrobial hygiene function enhances the performance of your shades for comfort and peace of mind." What this means is by fighting the growth of microbes on the surface of the fabric, the product is continuously cleaner and less at risk of degradation from bacteria, staining, mould, and mildew. The Sanitized® hygiene protection is built in as a critical part of the manufacturing process of Kleenscreen and will not wash or wear away for the useful lifetime of the product. Featuring 11 contemporary colours, it is available in a 3000mm width and has both Oeko-tex and Greenguard certifications.



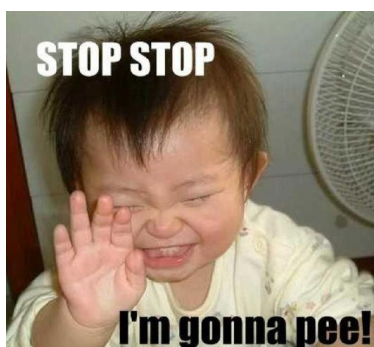
\*On a personal note, one of the things about this range which surprised us is that the colour names are actually accurate. 'Pure White' is like the white cat lying in snow in a blizzard, 'Charcoal' looks like it just came hot out of the embers of the prime minister's political credibility (*no? too soon?!*), and then there is 'Pumice'... is it just me or is the thought of this colour makes you want to rub your hands and feet all over this fabric? (*umm... it suddenly went quiet in the office?!*)

Of course, if you haven't already, call Kate or Robert for more info on this **SUPER SPEESH** grouped fabric...

## And now, some useful information to share from us to you at no extra charge...

- ❖ In the scientific world, a theory exists that no two people see a colour the exact same way!!

*That's right... it means that colours are a pigment of your imagination!*



## On to some more great news.....



With travel holidays in Australia now back in vogue, how does **Uluru** or **Noosa** sound? Awesome? Chillaxing? What about **Sydney** or even **Longreach**? Okay, that last one... I have no idea where that is, but it sounds great doesn't it?

Well, our Aussie friends, Wilson Fabrics, is bringing all these inspiring places into the homes of the travel starved masses... And the best part is that these are **ALL AUSTRALIAN MADE FABRICS**\*!! Right here in our hot, sunburnt country (non-climate change related according to some?!).

\*For those who are interested in geography, the factory is in Wangaratta, Victoria.



---

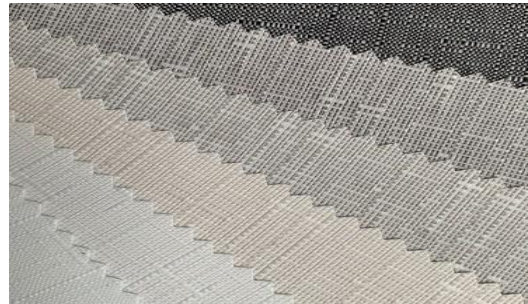
**Longreach** features a cross hatching and multi-directional jacquard weave to supply a natural and structural look and feel. Available in 9 modern colours. This range features Stain Protect which repels stains and spills.

---

---

**Sydney** range focuses on versatility and function. The subtle texture and contrasting colours compliments a wide range of interiors. Sydney is available in 7 natural colours and is 100% Australian made.

---



---

**Uluru** is a modern design that adds interest and style which ensures a beautifully interesting textured design. Radiating undulating tones, Uluru is available in 11 stylish colours which will suit a variety of interiors. Uluru also has the added benefit of being PVC and Lead Free, Stain Protect certified and Australian Made.

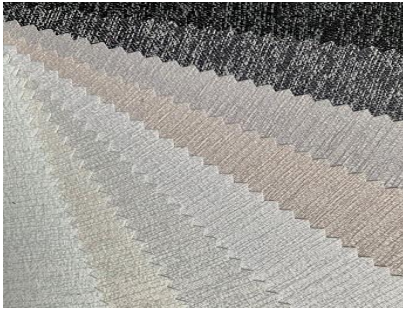
---

---

**Barrier Reef** is a naturally textured jacquard woven blind fabric available in 8 vibrant colours featuring symmetrical design that compliments contemporary styling to make any home look fresh and youthful. The Blockout option features superior PITCH BLACK™ Blockout coating which surpasses Australian standards.

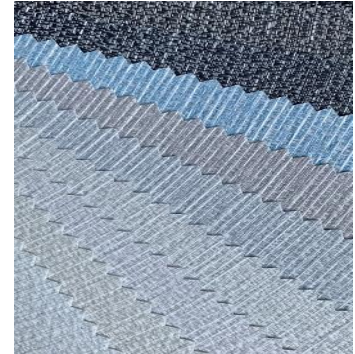
---





**Daintree** features a stylish natural slub creating textural interest for a pure organic look with 7 sophisticated colours available. Australian Made, Daintree features superior PITCH BLACK™ blockout coating which surpasses Australian standards.

**Noosa** is a great plain textured range that looks sleek and modern which can be used in Roman, Roller or Panel option. Noosa gives off an organic, neutral slub to suit any interior. The Noosa range is available in 8 natural colours and is Australian Made, Fire Retardant, PVC and Lead Free.

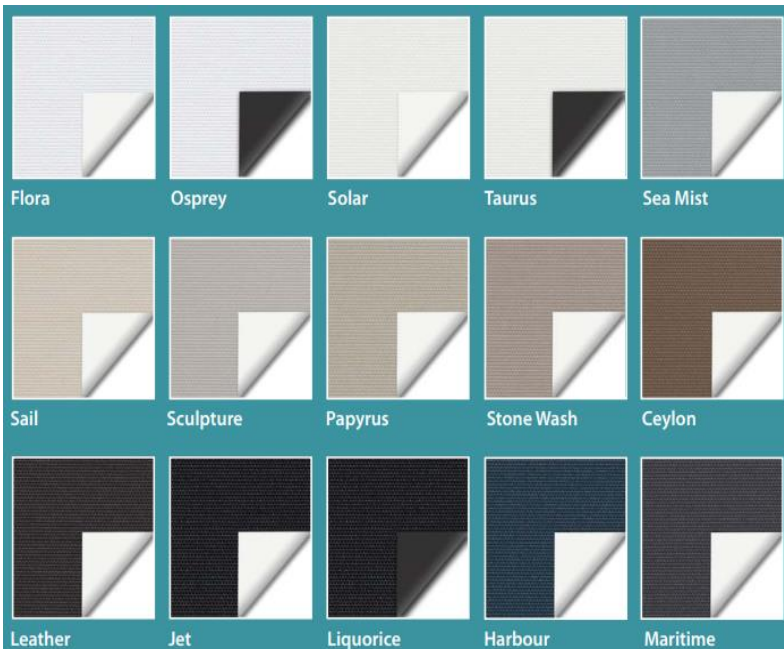


If you are looking to support Australians and Australian made products, then stop, pick up the phone and call us for more information. You won't regret it!



After much thought, we have decided that it is time to reflect and reacquaint ourselves with fabrics that have been available for a little while but still offer a great deal. (One of which is sitting in a unique group of only TWO Block-out fabrics that have the widest widths available in the Australian market!)

We are proud to re-present the **ICON FR** range!!



*What you need to know about Icon FR;*

- Super wide width – **3200mm**
- 15 gorgeous shades - colour matched with the spectacular Sheer-Weave 4500 range. (A complete combination for domestic and, specifically, commercial environments.)
- Safety features that other fabrics can only dream about... FR tested to AS1530 II & III and NFPA 701, LEAD and PVC free, Greenguard Gold accredited and comes with a pack of Band-Aids on request (...you know... because it looks so sharp!? Hmm, sounded great in my head for a split second...)
- Black foamed backing on 3 of the colours, the other 12 colours that missed out have white foamed backing...

**CALL US NOW FOR MORE INFO!!**

Robert is waiting patiently for your call with coffee\* in hand and his feet up.

\*For those interested in our office coffee dub culture, it's a double shot latte with fair trade coffee beans and certified organic milk from hand raised wild miniature cows that are milked according to the moon's rotation and oceanic tide times... and a Yo-Yo biscuit.

The second fabric range that we would like to remind you of is the

# SHAW

Performance Fabrics

## PALM BEACH BO & LF range.

‘Why?’ you ask politely... well, it is not the old Palm Beach of yesteryear... the colours are stunning (ref Fig 1), touch the fabric and the feel is warm, cuddly, and amazing! (ref Fig 2, which is the blatant use of cute animals to pull at your heartstrings... your welcome 😊)

And the best news is that it is **CHEAPER** than ever before!!!

Yes, you did read that right! It is now the same as the much beloved Mantra, LeReve or Skye BO & LF ranges!

Seriously.... what a bargain.... luxurious fabric now priced at like... like...well, less luxurious fabric...

Figure 1

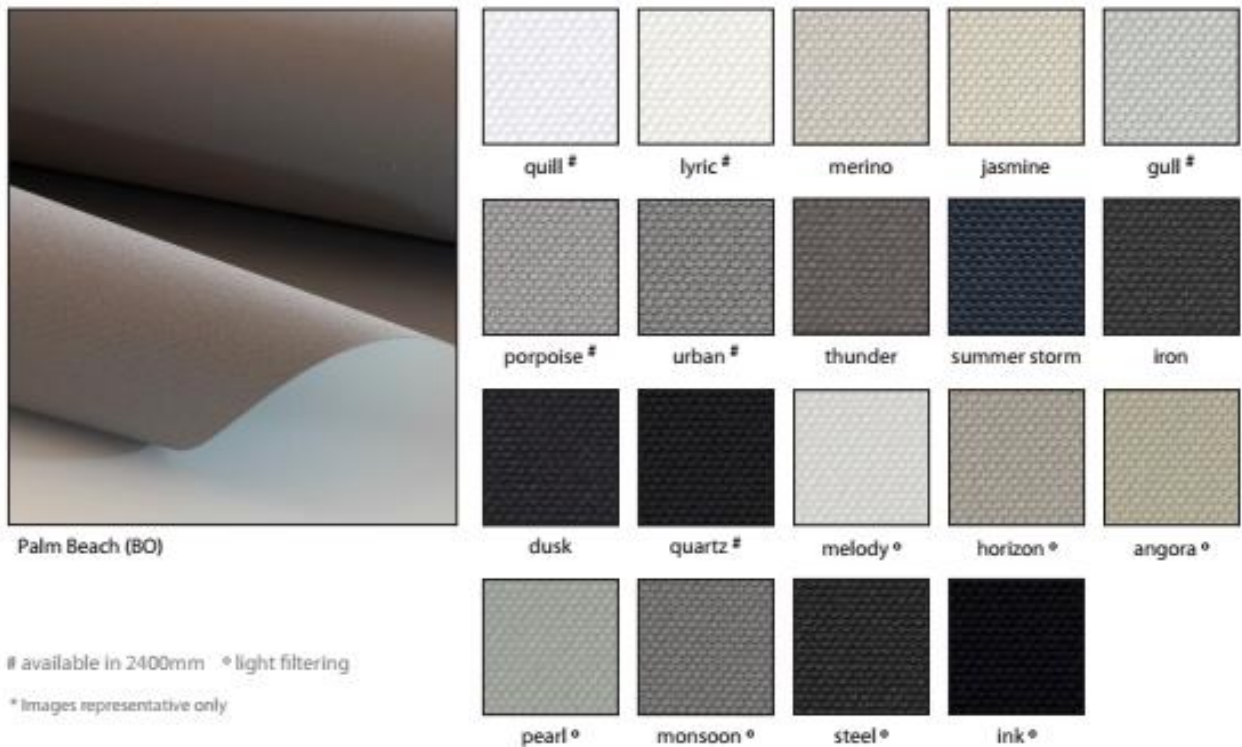


Figure 2

*If Palm Beach was a kitten...*



## NOW FOR THE LAST PAGE

A very quick rundown of discontinued or phasing out fabric ranges...

### **Wilson Fabrics**

Aquila– All colours

Lynx– All colours

Phoenix– All colours

Taurus– All colours

**Limited stocks**

### **Blindware**

Picturesque+ 4505 – All colours

Picturesque+ 4303– All colours

Shantung– All colours

**Limited stocks**

\*\*As always, if requesting any of the above, please contact us for availability....

*There is so much more to tell you but, alas, we have hit the 6-page max...  
And so, as a wise person once said to us ... 'OMG, give it a rest will you!?',  
We will leave you for now but until next time,  
Take care! And stay safe please!*

*Ciao xx*

*If you see someone crying....*



*ask them if it's because of their haircut....*