

NEW NEWS AND SOME NOT SO NEW NEWS



Something to ponder

'Do I really have free time now or did I conveniently forget all the things I need to do?'



We are so, so excited to be heading off to the BMAA Super Expo in a couple months' time! Our head honcho and her posse will be working hard and long hours to give our clients, our family, the jewels in our eyes, only the best of the best. But enough about Kirsten and the rest of us who are left behind to man the factory....

Kate and her team will be sourcing the newest and brightest products to hit the Australian window furnishing market this year! No major supplier stalls will be left un-harassed after our SWAT* CBC'ers have tornado'ed their way through the display shelves, upending each stall, leaving no blind unrolled, for that elusive item that will give you the edge over others.



And when the day closes, the CBC'ers will thumb their way back to the YMCA hostel for a cup of soup, a sandwich and a lie down before starting this all over again the next day. For those who can't make the show, please let us know if you are interested in any new products and our SWAT* team will gather the intelligence and swiftly report back to you.

** S.W.A.T. - Silent Wind Assault Team
– they clear the masses with deadlies
for Kate to go straight to the target.*



CAUTION

**On Thursday, 29 June 2023,
CBC will be closed for the whole day to
savour and enjoy the much-loved annual
stock-take.**

***For your safety, DO NOT attempt to approach
Kate, within a 5-kilometre radius of Golden Grove
on this day. She may be armed.**



TEXTSTYLE

Those sneaky people at Textstyle have been at it yet again, quietly behind the scenes, working hard designing and manufacturing the release of a stunning new block-out fabric that will drown out those spine-tingling cries of...

'We are so bored going over the same old stuff every freaking day!' No? Not you? Oh...I'm on my own with this one...

Introducing the new **Cascata** fabric range

Good news for you, a waterfall inspired design that doesn't make your wallet drown in sorrow...

*The bad news for us is we couldn't flush it into the much higher price groups... it's down in **GROUP 1**, damn it...*



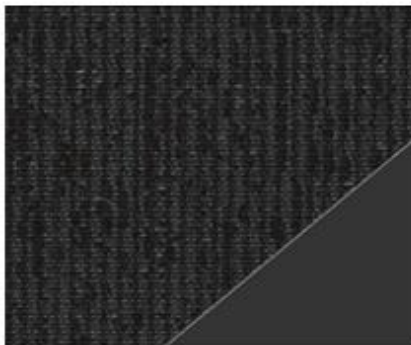
Grigio – PG rated.
(Just two shades of grey)



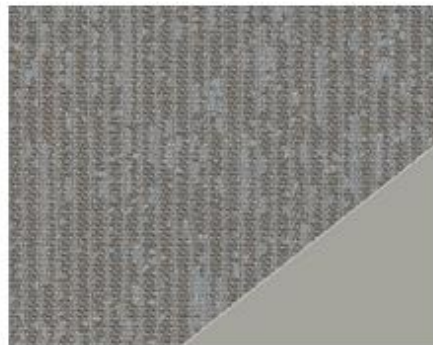
Avorio – Ivory
(Not to be confused with Ebony or MJ)



Nuvola – Cloud
(Not as light as a sunny day but not as dark as our humour)



Corvo – 'Raven' in Italian/Spanish
OR 'Knife' in Chilean *(Either way, nobody wants one on a bad day...)*



Pepe
Uncle on my mother's third cousin's husband's side



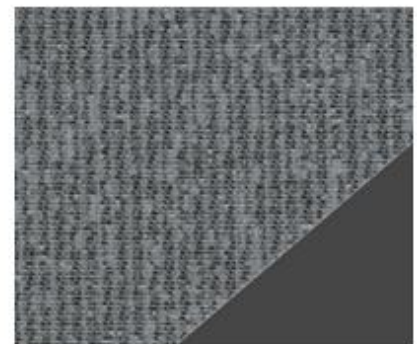
Mercurio – Mercury
(Or 'Gus', for all those Aussie TV trivia buffs out there)



Baltico – for the Baltic Sea
(Well, that's how Uncle Pepe says it)



Neve – Snow or Bright, radiant
(But not on Monday mornings)



Ardesia – slate/rock that is easily split into thin layers.
(Nope, not going there...)



Hunter Douglas has released two new fabrics
 "Avalyn" & "Westman",
 available in both blockout and light filter.
 The absolute best bit is they are AUSSIE MADE!!!!



Have a listen to Turnils Collage's description about the fabrics below!

"The **Avalyn** fabric range has the bespoke charm of a handcrafted garment delivering a unique design. The artisanal detail in the fabric plays with natural structures and textures and is ideal for anyone wanting a contemporary style loaded with organic influences. This range is available in seven monochromatic colourways, from light to mid hues and dark tones in both Translucent and Blockout opacities. "



Platinum

Pearl

Dusk

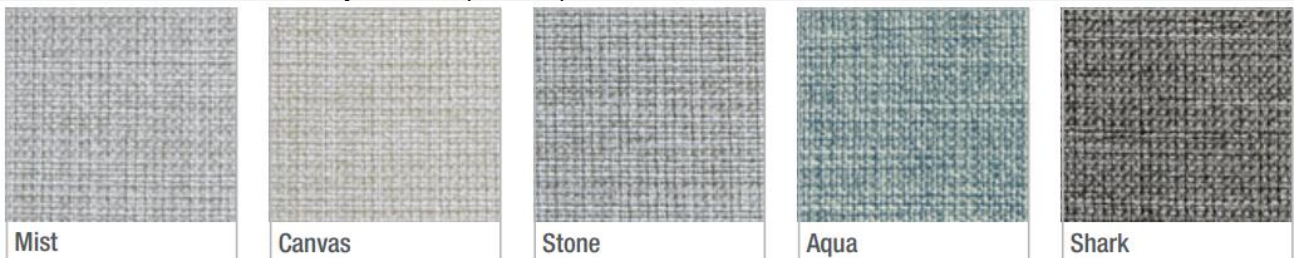
Natural

Ash

Graphite

Nero

"The **Westman** range features a sophisticated, textured weave and reinterprets the traditional linen fabric with a contemporary twist. The mixed yarns running through the warp and weft of the weave create a subtle mélange effect, giving the fabric a truly unique aesthetic. The colour palette for this collection is soft and understated to allow the mélange effect to be the focal point. The stunning colour palette will offer five colourways developed to pair well with both minimalistic and classic interiors."



Mist

Canvas

Stone

Aqua

Shark

*Avalyn & Westman Blockout fabrics are priced in Group 6,
 while the Light Filter is Group 4*

A friendly reminder to you about the gorgeous fabrics available for those pesky commercial jobs!!!



ICON FR 3.2
The Definitive Commercial Blackout Fabric

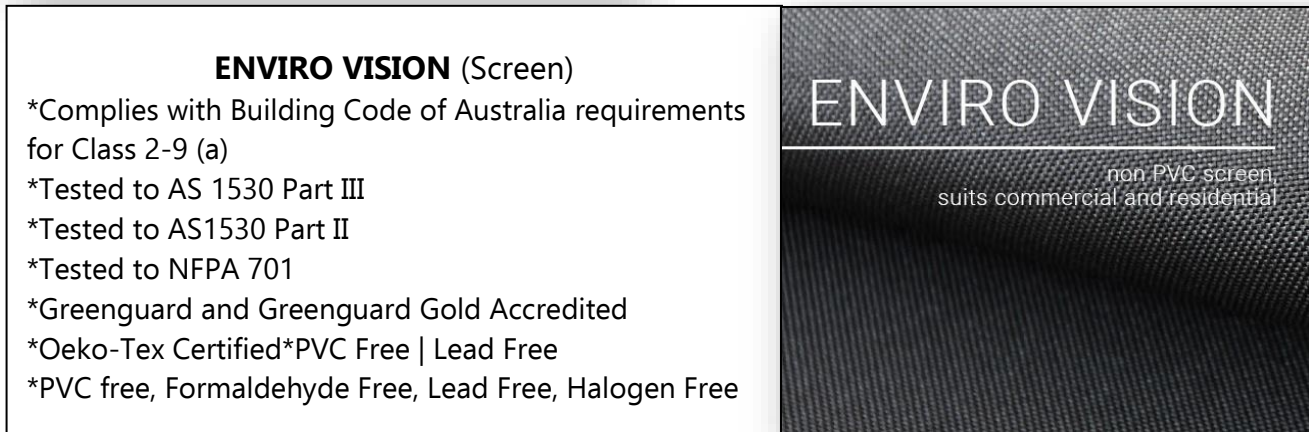
LEAD FREE
GREENGUARD GOLD

EXTRA WIDE

Co-ordinates with SW4500ECO

ICON FR 3.2 (Blockout)

- *FR Tested to AS1530 part II & III | NFPA 701
- *Colour co-ordinates with SW4500ECO
- *On trend commercial colours
- *12 with White foamed acrylic backing
- *3 with Charcoal foamed acrylic backing
- *Greenguard Gold accredited
- *PVC Free | Lead Free
- *Extra Wide 3200mm



ENVIRO VISION (Screen)

- *Complies with Building Code of Australia requirements for Class 2-9 (a)
- *Tested to AS 1530 Part III
- *Tested to AS1530 Part II
- *Tested to NFPA 701
- *Greenguard and Greenguard Gold Accredited
- *Oeko-Tex Certified*PVC Free | Lead Free
- *PVC free, Formaldehyde Free, Lead Free, Halogen Free

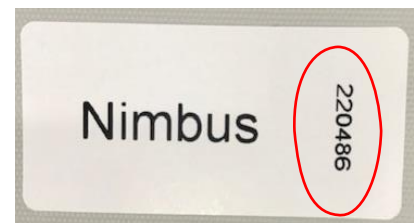
ENVIRO VISION
non PVC screen,
suits commercial and residential

In other SHAW news;

The Vibe fabric range swatches have been updated to more accurately reflect the colours available for manufacture of internal blinds.

If the label on the back of the swatch does not start with a "220....", please remove them from your sample books and contact Michael Grundy from Shaw Australia for updated replacement books.

michael.grundy@Shawaust.com.au



A quick one for this Easter.....

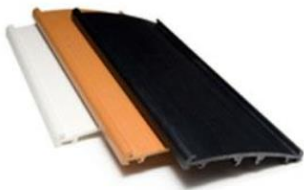
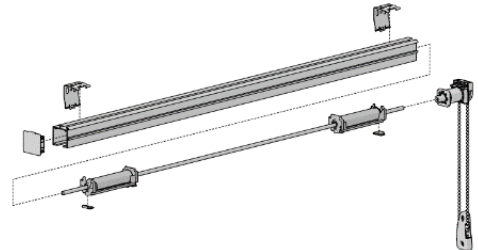
*Why doesn't the Easter Bunny make any noise when he has... you know....marital relations?
Cos he has cotton balls....*



In the humming background of the CBC factory, we are constantly monitoring component pricing in the hope of saving some dosh for us you. Sniffing out a bargain is one of our joys here in the office depths, apart from a biscotti dipped in a double shot cuppacino.

We are so very proud to announce that we have hit a small jackpot for you, our clients, our friends....

Effectively immediately, the costings for the Roman blind Chain Drive system have been revised with a price cut that will please the unplease-able.....



AND the Linea Valance was frisked against the wall and so now has been drastically reduced as well!!!

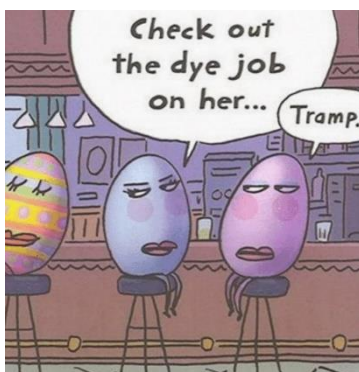
Call us for all your inquiries *after 8am* because...



And now for some Bits And Pieces that are handy to know...

Textstyle: TUSK fabric range – discontinued, please remove from your collection

Uniline: New fabric under investigation – details soon!!



Happy Easter to all and stay safe!
Ciao from all the team at CBC xx



*Dear mother-in-law,
Please stop telling me how to raise my kids.
I live with one of yours - I've seen your work....*

